

NOTES

1. DOOR FRAME TO BE STEEL OF MIN 5mm THICKNESS TO ACCEPT M6 FIXING BOLTS, AND TAKE WEIGHT OF DOOR (approx 20kg/m²).
2. ALL INSIDE SURFACES OF THE FRAME TO BE MIN 150mm, HEADER AND JAMBS TO BE FLUSH AND FREE FROM ANY PROJECTIONS.
3. TOP TRACK IS ONLY USED AS GUIDE. THE DOORS SIDESHUING AND THE WEIGHT IS SUPPORTED AT THE JAMB HINGES.
4. THE FLOOR MUST BE LOWER THAN OR LEVEL WITH THE THRESHOLD IN THE FOLDING AREA MARKED ***** TO ALLOW LEAVES TO OPEN EASILY.

NUMBER OF DOORS

HANDING LH (AS DRAWN) RH

FINISH (specify material and colour)

EXTERNAL SKIN:

INTERNAL SKIN:

OPTIONS (please tick or indicate qty reqd)

VISION PANELS - SEE GLAZING LAYOUT DRAWINGS

680x390 PLASTIC EASIFIT

400x600 ALUMINIUM FRAME

400x1200 ALUMINIUM FRAME

600x600 ALUMINIUM FRAME

600x1200 ALUMINIUM FRAME

WICKET DOOR (in panel 2 only)

STANDARD LEVER HARDWARE

EMERGENCY ESCAPE FURNITURE

LOCKING and HANDLES

ESPAGNOLETTE BOLT BETWEEN LEAVES
182

THRESHOLD PLATE

NONE - (NOT RECOMMENDED)

SURROUND FRAME

150 x 75 RSA REAR MOUNTED FRAME

200 x 100 RHS BETWEEN WALL FRAME

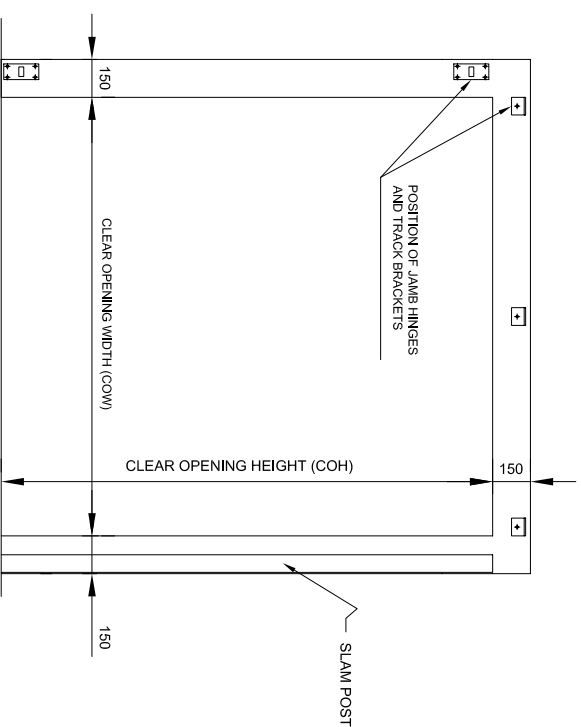
OTHER - PLEASE SPECIFY

SITE DETAILS

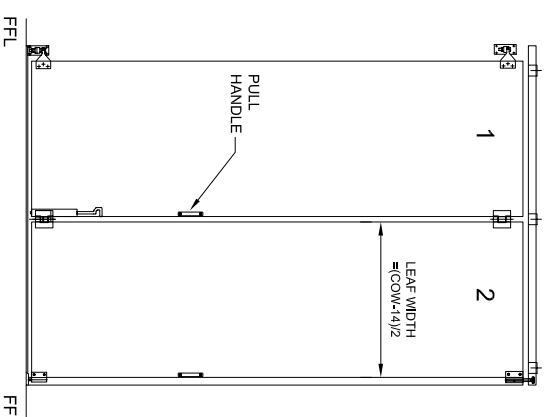
OPENING / DOOR REF.

DATE DRAWN BY

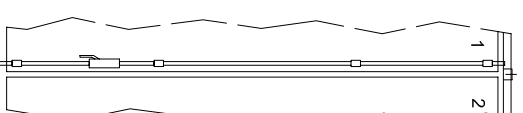
DRAWING No. SWT20M-5001



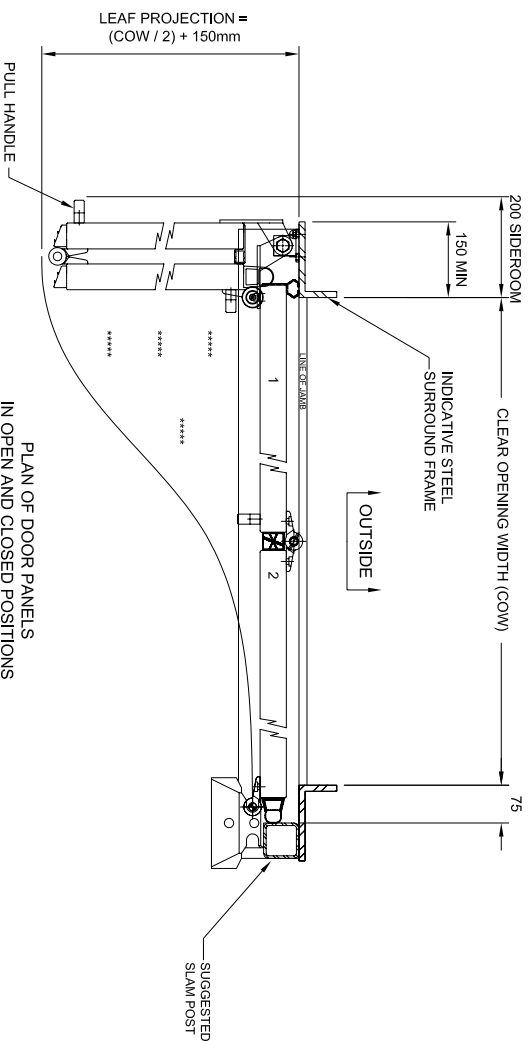
ELEVATION SHOWING INSIDE FACE OF STEEL DOOR FRAME



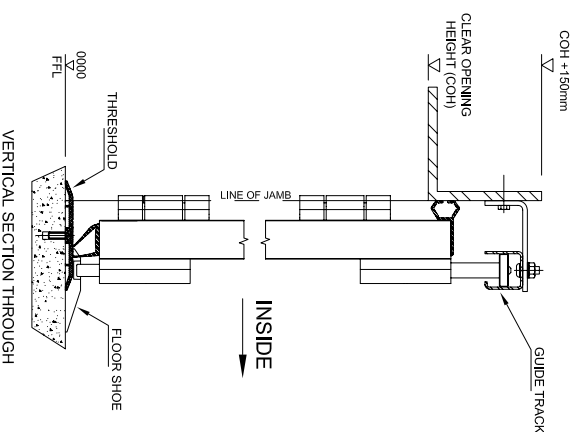
INTERNAL ELEVATION SHOWING STANDARD HARDWARE OPTIONS



DETAIL SHOWING OPTION FOR ESPAGNOLETTE BOLT



PLAN OF DOOR PANELS IN OPEN AND CLOSED POSITIONS



VERTICAL SECTION THROUGH

MAX OPENING SIZES	SUBJECT TO MAX. DOOR AREA OF 12M ²
UP TO 2400mm WIDE	
UP TO 6000mm HIGH	

SWIFT 2+0 LEAF, MANUALLY OPERATED