

Case Study

Jewers Go Down-Under on Canberra Metro

SUMMARY

Overview

Industry: Railway depot

Solution: Swift SEW fast-acting, bi-folding doors with integral OLE cut-out

Benefits

- Accommodates OLE cables and railway lines.
- Fully open in under 8 seconds
- Fail-Safe security features to prevent injury and damage during operation
- Fully insulated for thermal efficiency and noise reduction



About Jewers Doors Ltd

Jewers Doors is a world-leader in the design, manufacture, installation and repair of industrial doors across all industrial sectors.

Jewers Doors have been installed not only in the UK, but also throughout the world including Europe, Middle and Far East and Australasia.

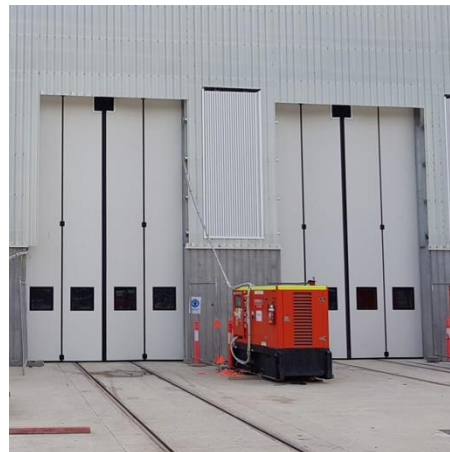
Jewers Doors' Australian reseller, Max Doors Solutions (MDS), have recently completed the installation of four sets of Swift-SEW doors on the Maintenance Depot for the new Light Rail system in the country's capital, Canberra.

Swift SEW Doors

The maintenance depot is accessed by four roads, each road being secured by a pair of seven metre high Swift-SEW doors. Three of the doors are four metres wide, whilst the door on the fourth road is five metres wide to accommodate the LRV accessing the opening on curved tracks.

Each Swift-SEW door is configured in four leaves with two leaves folding to each side and folding clear of the opening on the inside of the building. Panels are 62mm thick, insulated, single piece steel faced composite panels operated by a powerful, centrally mounted SEW drive unit. Control is via a purpose-built PLC control panel incorporating remote status reporting and inverter control for ultra-smooth operation.

Door opening time is under eight seconds, and in the event of power failure, a low-level disengage handle enables the doors to be easily opened by hand. Doors are powder coated to match the cladding façade and each leaf is fitted with a double-glazed toughened glass vision panel set in a thermally broken aluminium frame to provide light ingress and visibility.



Safety and Efficiency

User safety is ensured with full height pressure sensitive safety edges in the leading edge of the door, and photocells to prevent the door closing on an LRV and create a safe zone around the door. Each door leaf is fitted with full perimeter, seamless, multi-wall EPDM rubber seals to prevent dust and water ingress.

A high level 500mm x 580mm cut-out allows the door to safely close around the overhead line equipment (OLE). The cut-out is lined with a dielectrically rated rubber sheet tested to 30kVA to prevent bird entry and reduce dust ingress, and the door is earthed back to the structure with suitably rated earth-bonding braids.

Do you need a full inspection report on an old or failing door or a professional company to survey openings and quote a price for new doors?

Jewers Doors are a DHF accredited company and operate under strict guidelines to advise on the best and safest solution for each application and provide an expert service that is second to none.

For further information e-mail [Mark Jewers mjewers@mjewers.com](mailto:Mark.Jewers@mjewers.com)