

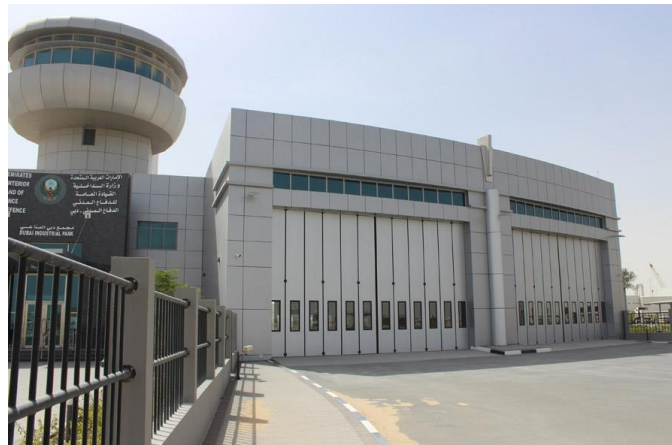
## News Release

FOR IMMEDIATE RELEASE

### Jewers Doors Secures Three New Fire Stations in Dubai

Jewers Doors have recently completed the supply and installation of nine sets of large Osprey sliding-folding doors to secure three new Civil Defence stations in Dubai. The stations are located at Nad Al Sheba, Al Mizhar and Jebel Ali, and are part of an ongoing development plan commissioned by the Dubai Municipality to increase the safety of the local communities. The total cost of these three new fire stations is AED 45 million ((£9.23 million)

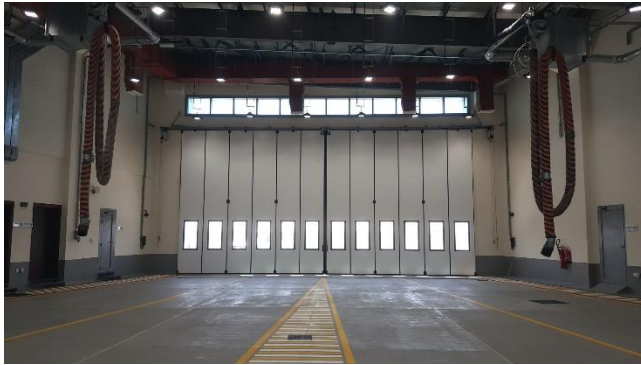
Each centre incorporates offices and service areas on two floors, but key to the operational functions is a two storey garage housing fire appliances, water trucks and rapid response vehicles. Under emergency conditions, the vehicles exit via two 9.6 metre wide by 6 metre high openings, which are secured by 12 leaf Osprey sliding-folding



doors. Each door is electronically operated, with six leaves folding to each side of the opening. In the closed position, door leaves form a completely flat façade within the opening. When opening, leaves slide across the opening and stack behind each reveal, ultimately folding into a 1m<sup>2</sup> footprint to leave a completely clear opening to ensure maximum access for the exiting vehicles. On return to the depot, vehicles enter the appliance bay via another 6 metre high, 12 metre wide Osprey door at the rear of the garage.

The doors are operated by variable drive speed motors, each with ground level haul chains and digital control panels. A single push button within the control room opens all doors simultaneously in an emergency situation. Local push buttons to each door allow users to close doors safely via deadman closing. All doors are designed with safety and security as standard. Leading edges of the doors are fitted with full height pressure sensitive edges, so if a door meets any resistance during automatic closing, it immediately stops and reverses.

For visibility when closed, each door panel incorporates a 600 x 1200mm argon filled, toughened glass,



double glazed vision panel, and is fitted with multi-wall rubber seals to all edges to reduce water, air and dust ingress.

Jewers' Regional Sales Manager; Ben Pritchard commented, "Our Phoenix range Osprey doors have been approved and used on all new Dubai Civil Defence stations since

2007. Due to the size of the openings, our Osprey doors are the most suitable system available in the market, and with us having an office in Dubai and our own service engineers on the ground, Jewers are ideally placed to support Dubai Civil Defence quickly when called."

ends

### **Editor Notes**

Hi- res images available on request

### **More about Jewers Doors**

Established in 1983 and still a family run business, Jewers Doors is a world-leading supplier of industrial doors operating from a state-of-the-art facility in the heart of Bedfordshire. With over 60 highly skilled and experienced staff in UK and UAE, the core of the business is design, manufacture, installation and repair of industrial door solutions across all industrial sectors. The Phoenix range of doors are designed for medium to large industrial applications, while the Esavian range is recognised as one of the world's leading range of aircraft hangar doors. Incorporating the very latest concepts and technologies, Jewers Doors have been installed not only in the UK, but also throughout the world including Europe, Middle and Far East and New Zealand.

For more information visit [www.jewersdoors.co.uk](http://www.jewersdoors.co.uk)

### **Contacts**

For media information

Colin Caldicott, Ultimedia PR

Tel: 01767 601470

Mobile: 07905 329616

e-mail: [colin@ultimediapr.co.uk](mailto:colin@ultimediapr.co.uk)