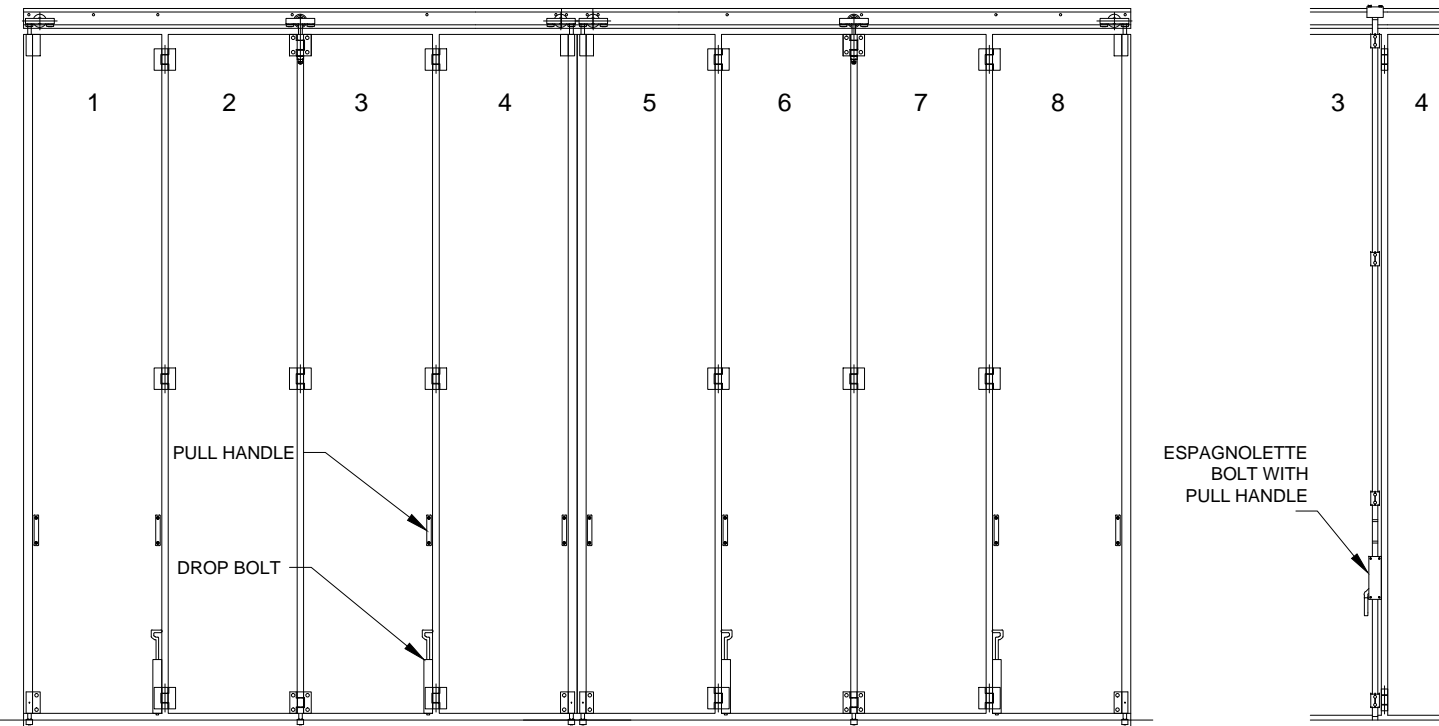
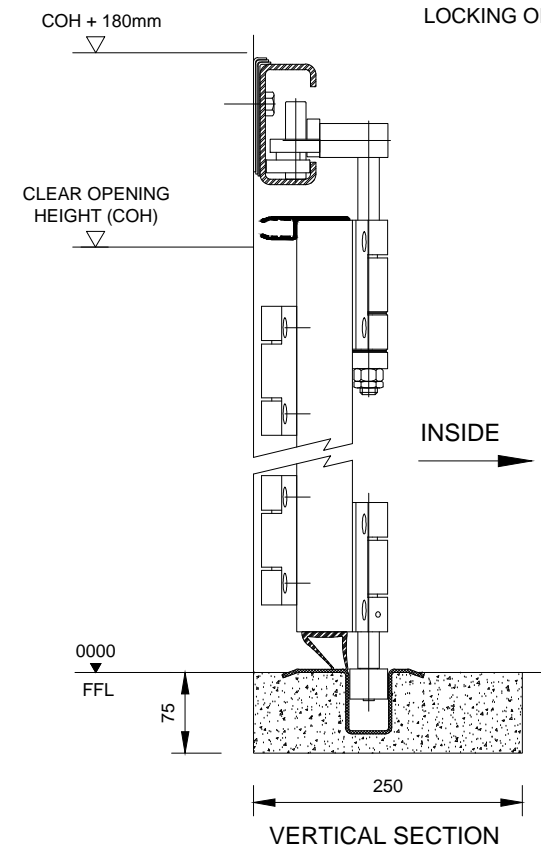


ELEVATION SHOWING INSIDE FACE OF DOOR FRAME

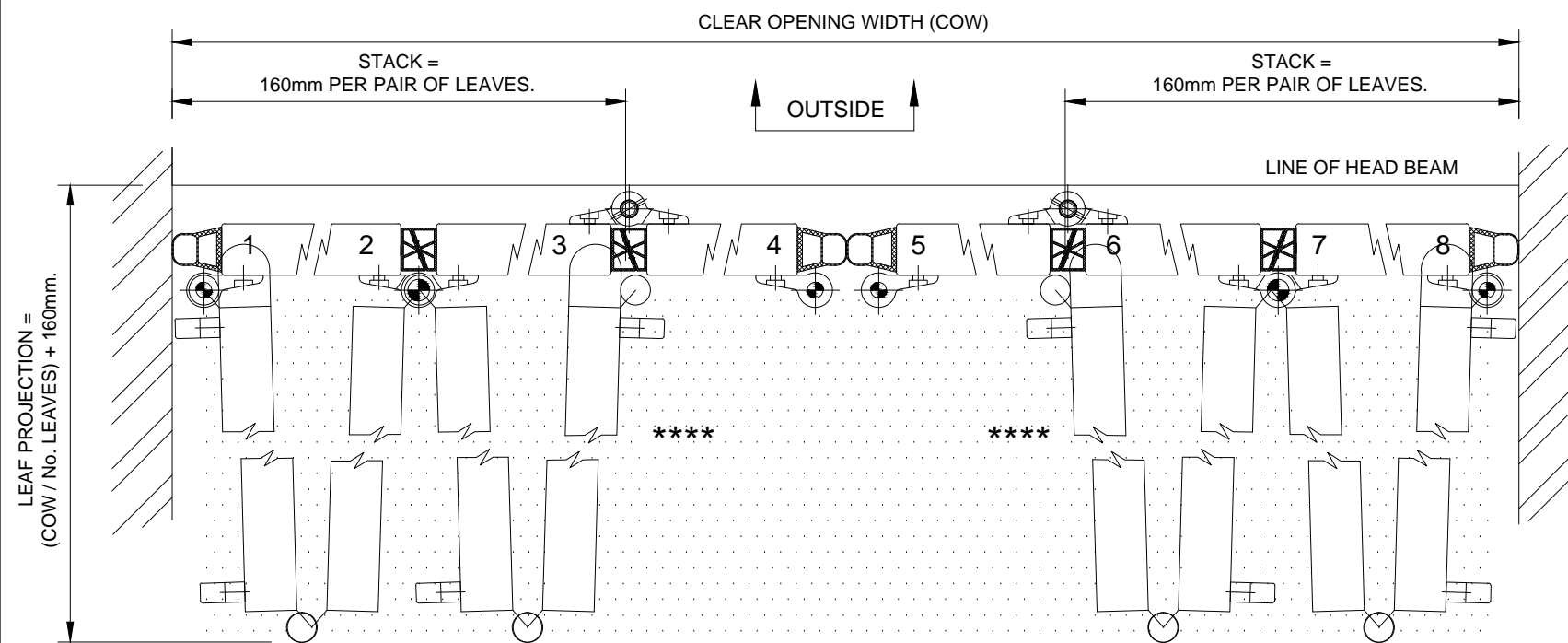


INTERNAL ELEVATION SHOWING STANDARD HARDWARE OPTIONS (AS DRAWN 4+4 LEAVES)

INTERNAL ELEVATION SHOWING LOCKING OPTION



VERTICAL SECTION



PLAN OF DOOR PANELS IN OPEN AND CLOSED POSITIONS

NOTE - STACK CAN BE MOVED TO ANY AVAILABLE POSITION ACROSS OPENING.

NOTES

- HEAD BEAM MUST BE SUITABLE TO ACCEPT M12 FIXING BOLTS AND DESIGNED TO TAKE DOOR WEIGHT OF APPROX 20kg/m<sup>2</sup>. MAXIMUM ALLOWABLE DEFLECTION UNDER WEIGHT OF DOOR - 8mm.
- INSIDE SURFACE OF HEAD BEAM TO BE MINIMUM OF 180mm.
- FLOOR MUST BE LOWER THAN THE THRESHOLD IN THE FOLDING AREA MARKED \*\*\*\*\* TO ALLOW LEAVES TO OPEN FREELY.

NUMBER OF DOORS

FINISH (specify material and colour)

EXTERNAL SKIN:

INTERNAL SKIN:

OPTIONS (please tick or indicate qty reqd)

VISION PANELS - SEE GLAZING LAYOUT DRAWING

- 680x390 PLASTIC EASIFIT
- 400x600 ALUMINIUM FRAME
- 400x1200 ALUMINIUM FRAME
- 600x600 ALUMINIUM FRAME
- 600x1200 ALUMINIUM FRAME

WICKET DOOR (indicate in which panel)

- STANDARD LEVER HARDWARE
- EMERGENCY ESCAPE FURNITURE

LOCKING - for each pair of leaves

- ESPAGNOLETTE BOLT
- DROP BOLT

LEAF CONFIGURATION

NOTE - LARGER OPENINGS CAN BE DIVIDED INTO ANY MULTIPLE OF LEAF STACKS. THE 'MAX STACK' TABLE INDICATES THE MAXIMUM OPENING WIDTH COVERED BY THE VARIOUS LEAF STACKS.

- |                                   |  |                                   |
|-----------------------------------|--|-----------------------------------|
| LEFT STACK                        | MIDDLE STACK                               | RIGHT STACK                       |
| <input type="checkbox"/> 2 LEAVES | <input type="checkbox"/> 2 LEAVES          | <input type="checkbox"/> 2 LEAVES |
| <input type="checkbox"/> 4 LEAVES | <input type="checkbox"/> 4 LEAVES          | <input type="checkbox"/> 4 LEAVES |
| <input type="checkbox"/> 6 LEAVES | <input type="checkbox"/> 6 LEAVES          | <input type="checkbox"/> 6 LEAVES |
| <input type="checkbox"/> 8 LEAVES | <input type="checkbox"/> 8 LEAVES          | <input type="checkbox"/> 8 LEAVES |
|                                   | <input type="checkbox"/> QTY MIDDLE STACKS |                                   |

SITE DETAILS

DOOR REFERENCE

DATE  DRAWN BY

DRAWING No. OSP-F2M-5102 (4)

MAX STACK SIZES		
MAX. HEIGHT	UPTO 5200mm HIGH	UPTO 6000mm HIGH
2 LEAVES	2300mm WIDE	2100mm WIDE
4 LEAVES	4600mm WIDE	4150mm WIDE
6 LEAVES	6850mm WIDE	6200mm WIDE
8 LEAVES	9150mm WIDE	8250mm WIDE

## OSPREY, FULLY FLOATING, MULTIPLE BUNCH BETWEEN JAMBS