

NOTES

1. DOOR FRAME TO BE STEEL OF MIN 5mm THICKNESS TO ACCEPT M8 FIXING BOLTS, AND TAKE WEIGHT OF DOOR (approx 20kg/m²).
2. ALL INSIDE SURFACES OF THE FRAME TO BE MIN 150mm, HEADER AND JAMBS TO BE FLUSH AND FREE FROM ANY PROJECTIONS.
3. TOP TRACK IS ONLY USED AS GUIDE. THE DOOR IS SIDE-HUNG AND THE WEIGHT IS SUPPORTED AT THE JAMB HINGES.
4. THE FLOOR MUST BE LOWER THAN OR LEVEL WITH THE THRESHOLD IN THE FOLDING AREA MARKED ***** TO ALLOW LEAVES TO OPEN EASILY.

NUMBER OF DOORS

HANDLING LH (AS DRAWN) RH

FINISH (specify material and colour)

EXTERNAL SKIN:

INTERNAL SKIN:

OPTIONS (please tick or indicate qty reqd)

- VISION PANELS - SEE GLAZING LAYOUT DRAWING
- 430x730 PMMA SNAPLOCK
 - 400x600 DGTG ALUMINIUM FRAME
 - 400x1200 DGTG ALUMINIUM FRAME
 - 600x600 DGTG ALUMINIUM FRAME
 - 600x1200 DGTG ALUMINIUM FRAME
- WICKET DOOR (in panel 2 only)
- STANDARD LEVER HARDWARE
 - EMERGENCY ESCAPE FURNITURE
- LOCKING and HANDLES
- ESPAGNOLETTE BOLT BETWEEN LEAVES 1&2

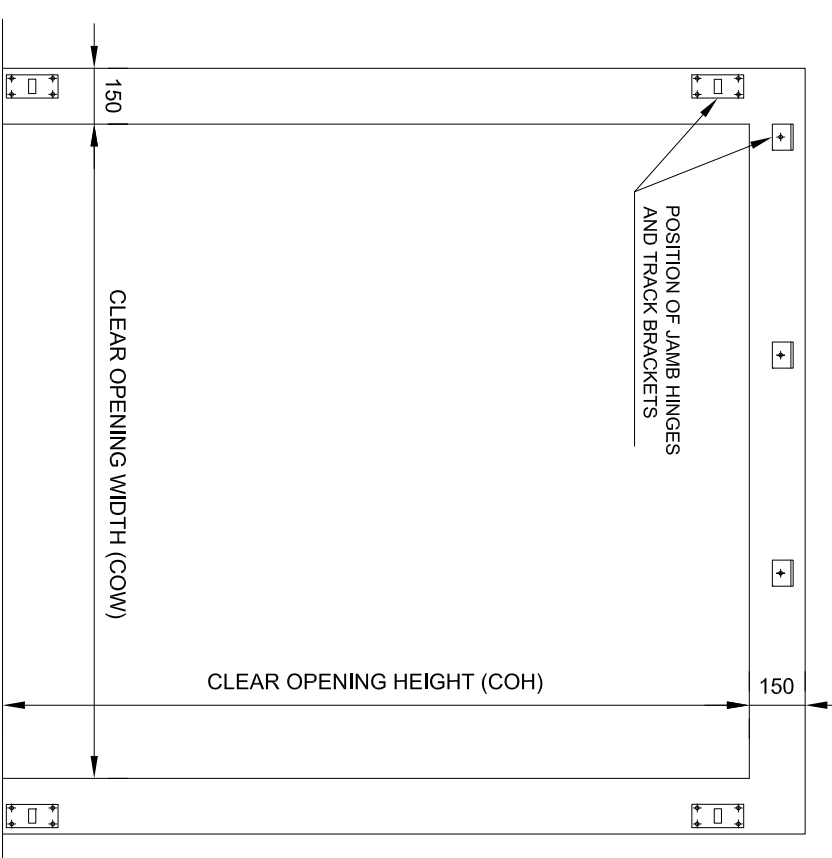
- ACTIVE LEAF HARDWARE
- PULL HANDLE AND DROP BOLT
 - ESPAGNOLETTE BOLT
- THRESHOLD PLATE
- NONE - (NOT RECOMMENDED)
- SURROUND FRAME
- 150 x 75 RSA REAR MOUNTED FRAME
 - 200 x 100 RHS BETWEEN WALL FRAME
 - OTHER - PLEASE SPECIFY

SITE DETAILS

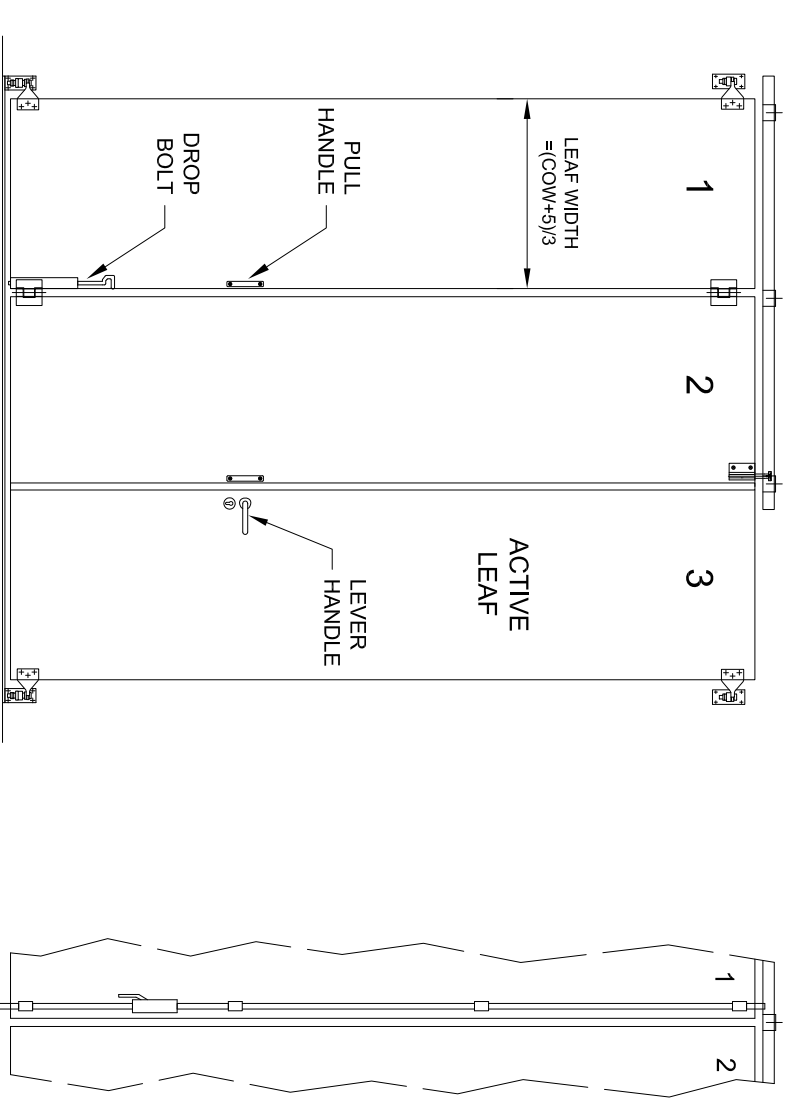
OPENING / DOOR REF. _____

DATE _____ DRAWN BY _____

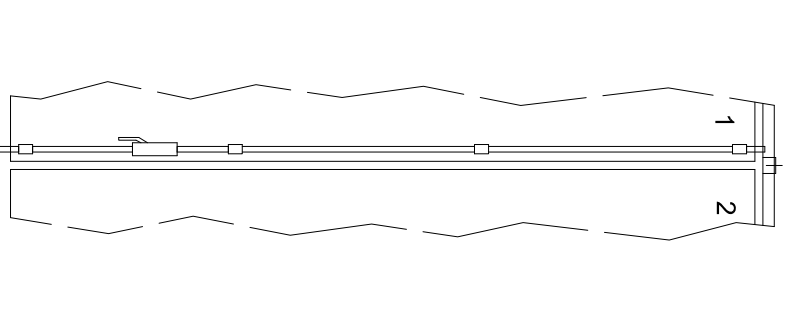
DRAWING No. SWT21M-5002 (3)



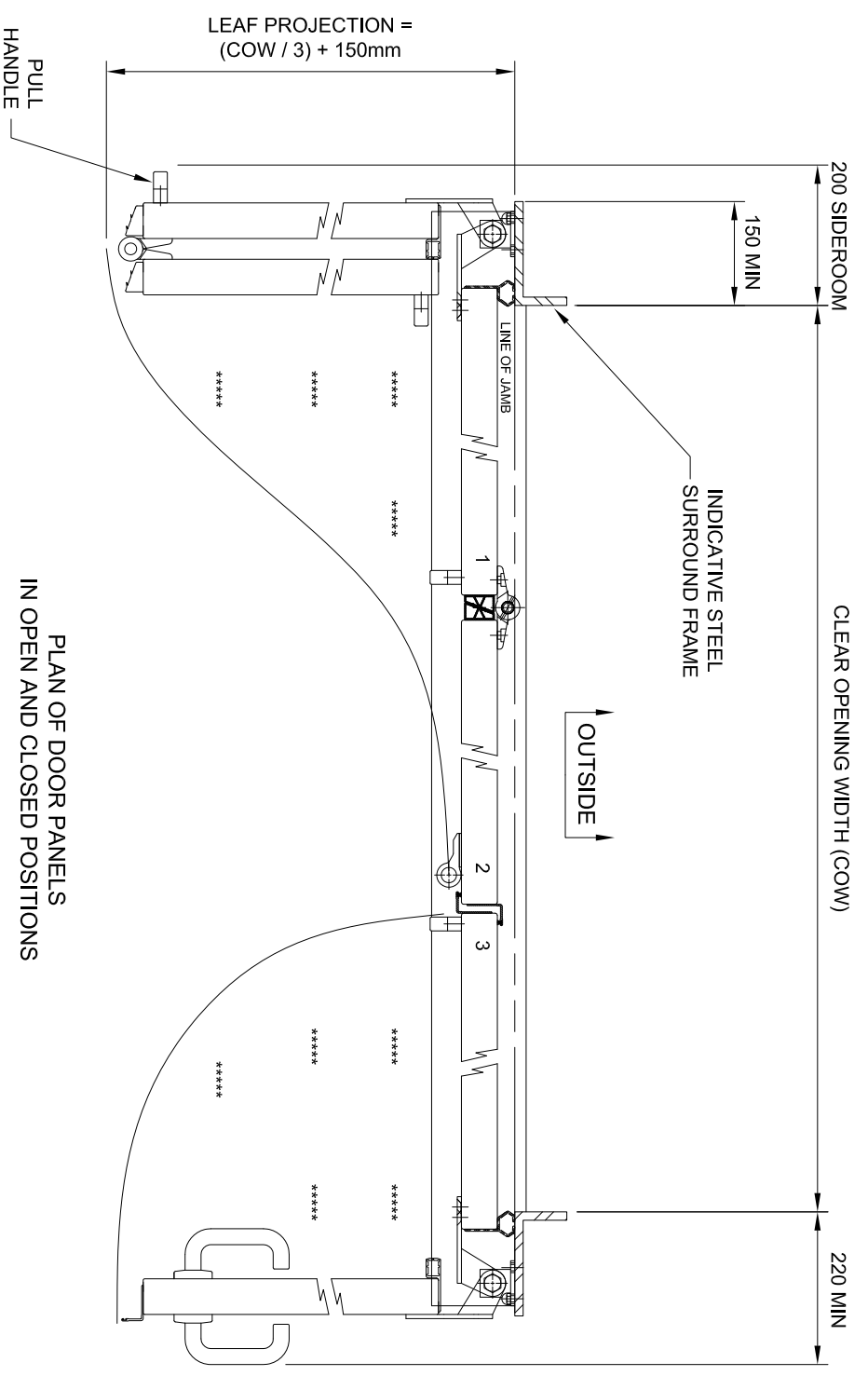
ELEVATION SHOWING INSIDE FACE OF STEEL DOOR FRAME



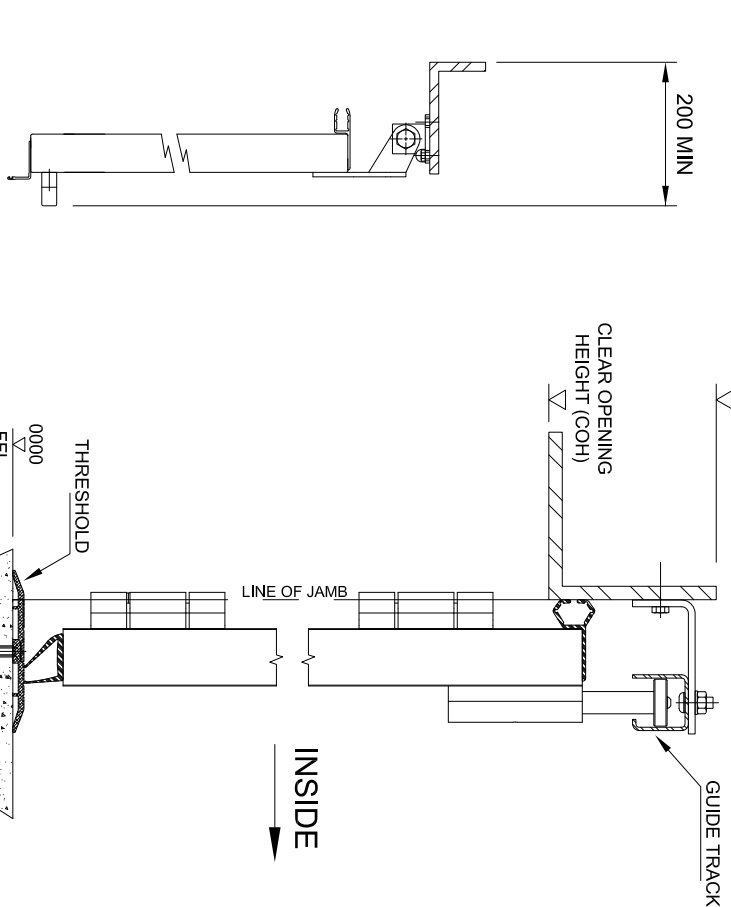
INTERNAL ELEVATION SHOWING STANDARD HARDWARE OPTIONS



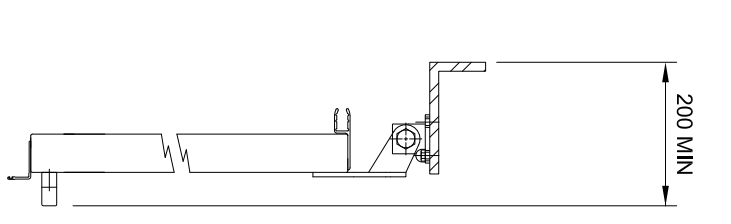
DETAIL SHOWING OPTION FOR ESPAGNOLETTE BOLT



PLAN OF DOOR PANELS IN OPEN AND CLOSED POSITIONS



VERTICAL SECTION THROUGH



SIDEROOM REQUIRED FOR PULL HANDLE AND DROP BOLT FITTED TO ACTIVE LEAF

MAX OPENING SIZES		
UP TO 3450mm WIDE	UP TO 3000mm WIDE	UP TO 2550mm WIDE
MAX 3000mm HIGH	MAX 4000mm HIGH	MAX 4800mm HIGH

SWIFT 2+1 LEAF, MANUALLY OPERATED (SWT-M)