

**NOTES**

1. DOOR FRAME TO BE STEEL OF MIN 5mm THICKNESS TO ACCEPT M8 FIXING BOLTS, AND TAKE WEIGHT OF DOOR (approx 20kg/m<sup>2</sup>).
2. ALL INSIDE SURFACES OF THE FRAME TO BE MIN 150mm WIDE, HEADER AND JAMB TO BE FLUSH AND FREE FROM ANY PROJECTIONS.
3. TOP TRACK IS ONLY USED AS GUIDE. THE DOOR IS SIDE-HUNG AND THE WEIGHT IS SUPPORTED AT THE JAMB HINGES.
4. THE FLOOR MUST BE LOWER THAN THE THRESHOLD IN THE FOLDING AREA MARKED \*\*\*\*\* TO ALLOW LEAVES TO OPEN EASILY.

NUMBER OF DOORS

FINISH (specify material and colour)

EXTERNAL SKIN:

INTERNAL SKIN:

OPTIONS (please tick or indicate qty reqd)

VISION PANELS - SEE GLAZING LAYOUT DRAWING

- 430x730 PMMA SNAPLOCK
- 400x600 DGTG ALUMINIUM FRAME
- 400x1200 DGTG ALUMINIUM FRAME
- 600x600 DGTG ALUMINIUM FRAME
- 600x1200 DGTG ALUMINIUM FRAME

WICKET DOOR (in panel 2 or 3 only)

- STANDARD LEVER HARDWARE
- EMERGENCY ESCAPE FURNITURE

LOCKING and HANDLES

- LOW-LEVEL MANUAL RELEASE HANDLES

THRESHOLD PLATE

- NONE - (NOT RECOMMENDED)

SURROUND FRAME

- 150 x 75 RSA REAR MOUNTED FRAME
- 200 x 100 RHS BETWEEN WALL FRAME
- OTHER - PLEASE SPECIFY

SAFETY EQUIPMENT

- SAFETY EDGES  PHOTOCELLS
- TRAFFIC LIGHTS
- OPENING SAFETY SENSORS

OPERATIONAL CONTROLS

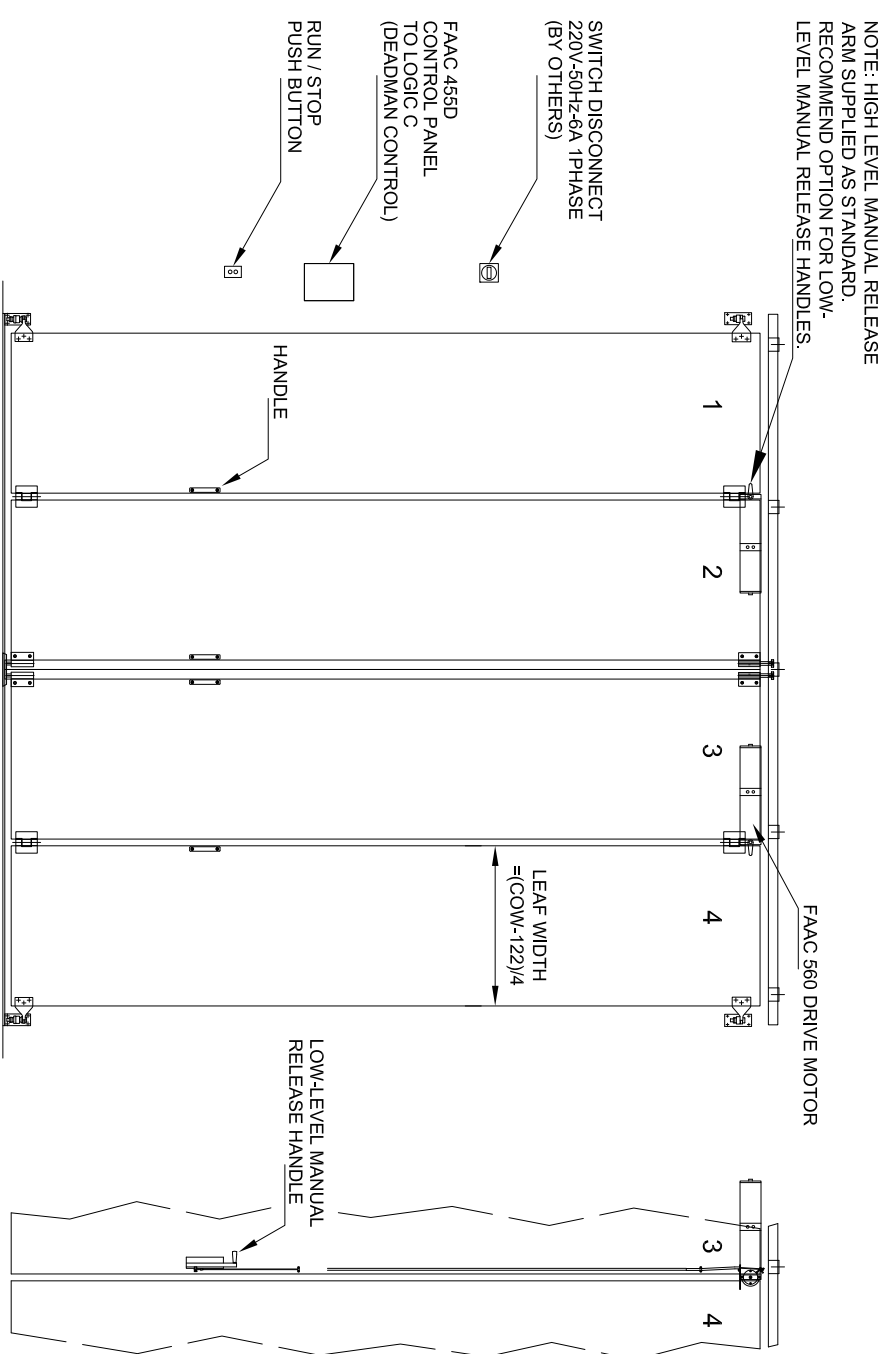
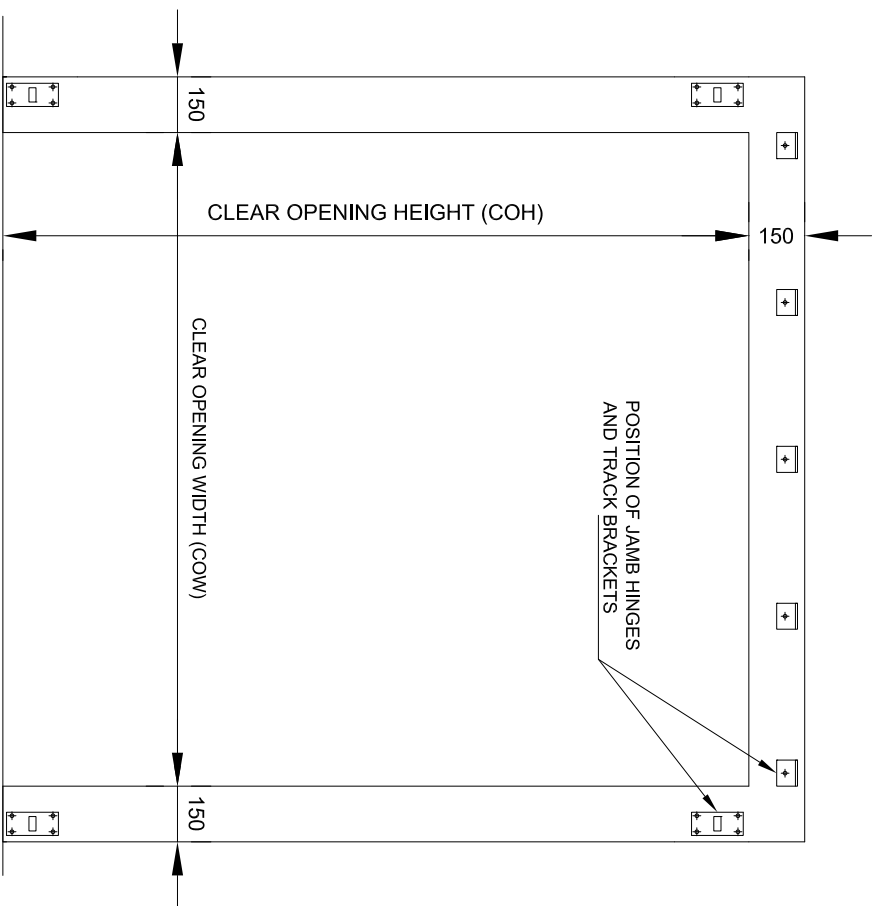
- CONTINUOUS PUSH TO OPEN / CLOSE
- SINGLE PUSH TO OPEN / CLOSE
- SINGLE PUSH TO OPEN / AUTOMATIC CLOSE
- BESPOKE CONTROLS (PLEASE SPECIFY)

SITE DETAILS

DOOR REFERENCE

DATE  DRAWN BY

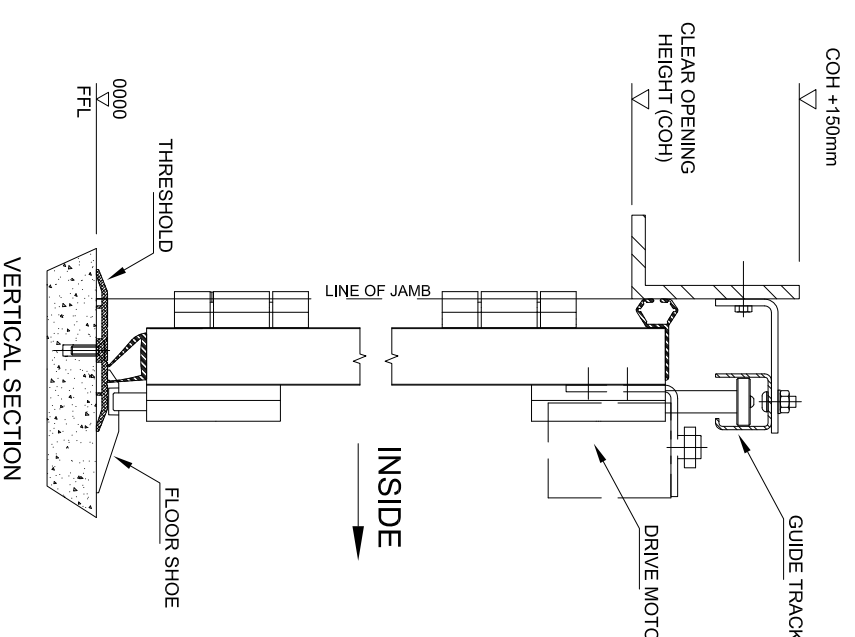
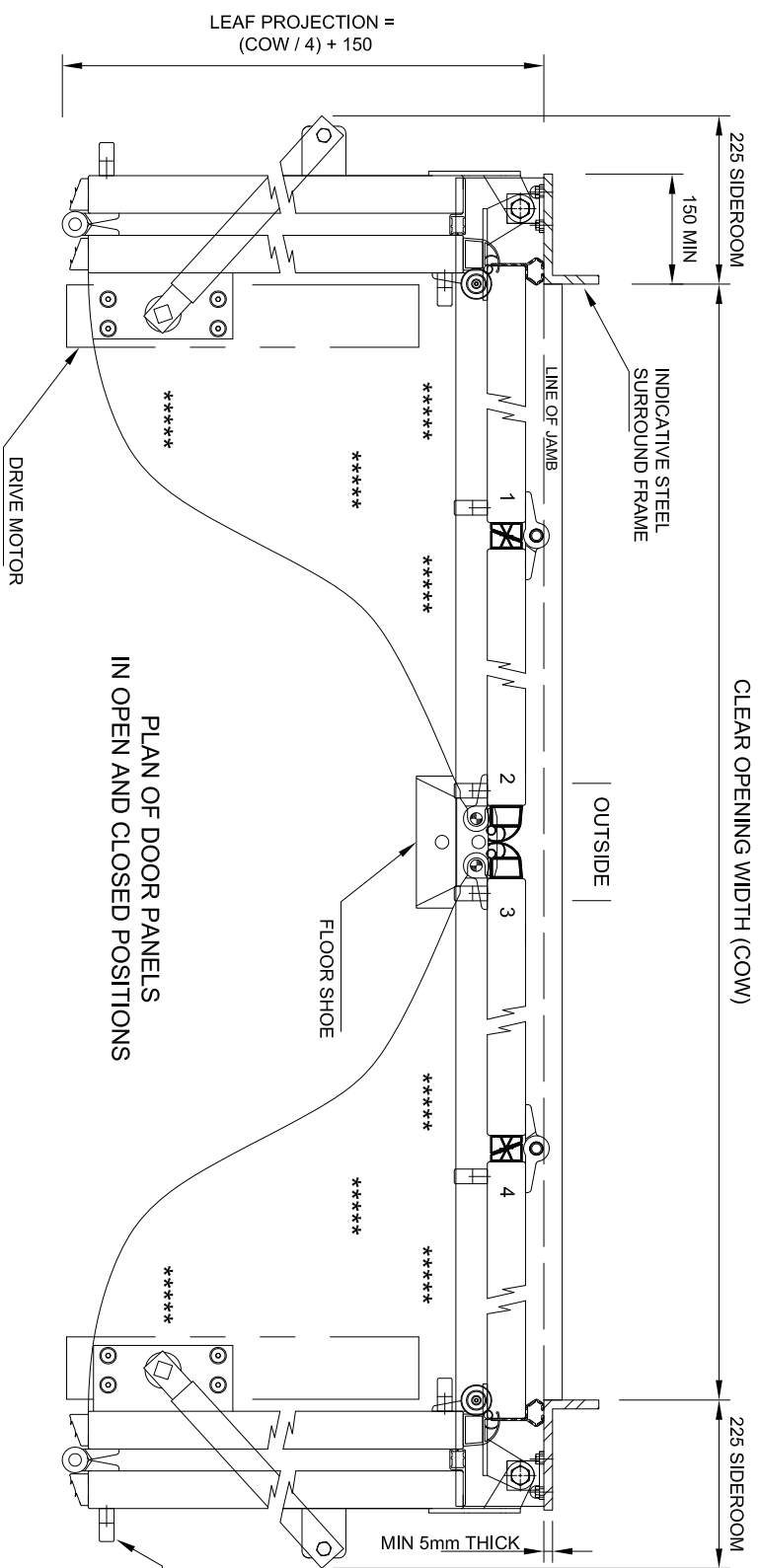
DRAWING No. SWT22E-5009



ELEVATION SHOWING INSIDE FACE OF STEEL DOOR FRAME

INTERNAL ELEVATION SHOWING STANDARD HARDWARE OPTIONS

OPTION FOR LOW-LEVEL MANUAL RELEASE



MIN OPENING SIZES	MAX OPENING SIZES	MAX DOOR AREA
2350mm WIDE	UP TO 4800mm WIDE	UP TO 24M <sup>2</sup>
2500mm HIGH	UP TO 6000mm HIGH	

**SWIFT 2+2 LEAF, ELECTRICALLY OPERATED (SWT-E)**