

NOTES

1. DOOR FRAME TO BE STEEL OF MIN 5mm THICKNESS TO ACCEPT M8 FIXING BOLTS, AND TAKE WEIGHT OF DOOR (approx 20kg/m²).
2. ALL INSIDE SURFACES OF THE FRAME TO BE MIN 150mm. HEADER AND JAMBS TO BE FLUSH AND FREE FROM ANY PROJECTIONS.
3. TOP TRACK IS ONLY USED AS GUIDE. THE DOOR IS SIDE-HUNG AND THE WEIGHT IS SUPPORTED AT THE JAMB HINGES.
4. THE FLOOR MUST BE LOWER THAN OR LEVEL WITH THE THRESHOLD IN THE FOLDING AREA MARKED ***** TO ALLOW LEAVES TO OPEN EASILY.

NUMBER OF DOORS

HANDLING LH (AS DRAWN) RH

FINISH (specify material and colour)

EXTERNAL SKIN:

INTERNAL SKIN:

OPTIONS (please tick or indicate qty reqd)

VISION PANELS - SEE GLAZING LAYOUT DRAWING

- 430x730 PMMA SNAPLOCK
- 400x600 DGTG ALUMINIUM FRAME
- 400x1200 DGTG ALUMINIUM FRAME
- 600x600 DGTG ALUMINIUM FRAME
- 600x1200 DGTG ALUMINIUM FRAME

WICKET DOOR (in panels 3 or 4 only)

- STANDARD LEVER HARDWARE
- EMERGENCY ESCAPE FURNITURE

LOCKING and HANDLES

- ESPAGNOLETTE BOLT BETWEEN LEAVES 1&2 AND 4&5

ACTIVE LEAF HARDWARE

- PULL HANDLE AND DROP BOLT
- ESPAGNOLETTE BOLT

THRESHOLD PLATE

- NONE - (NOT RECOMMENDED)

SURROUND FRAME

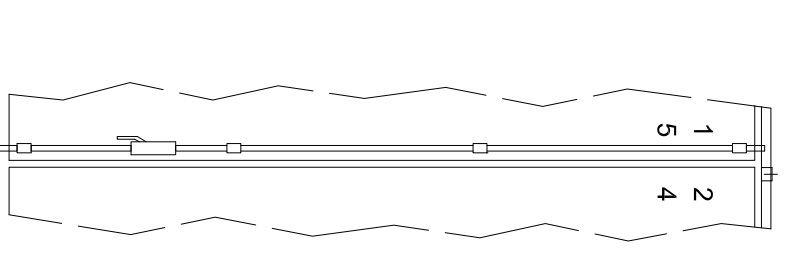
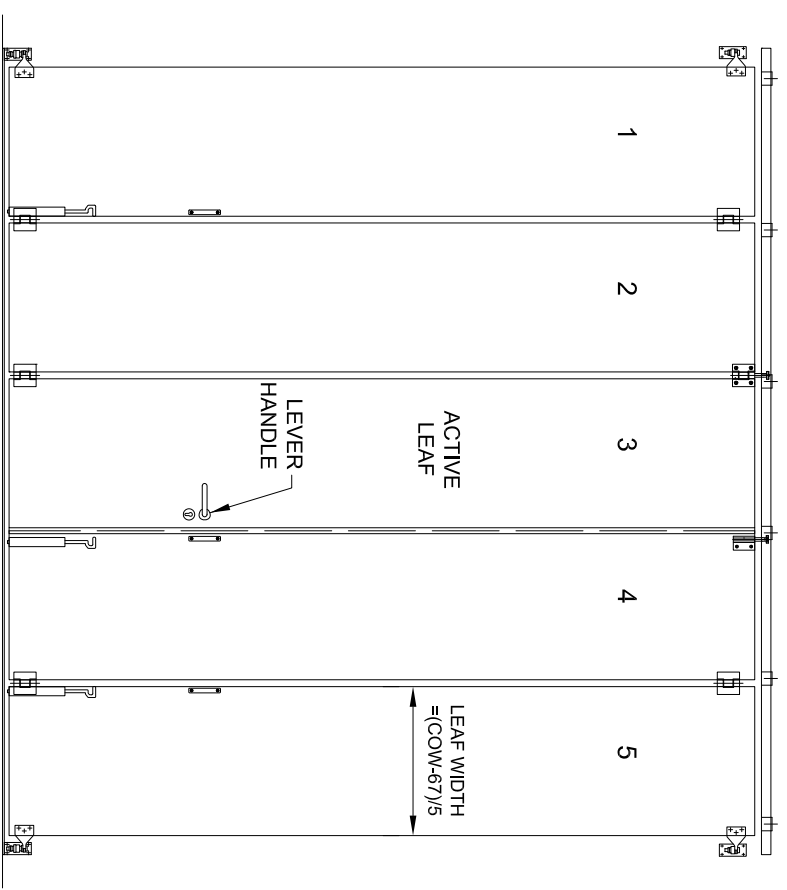
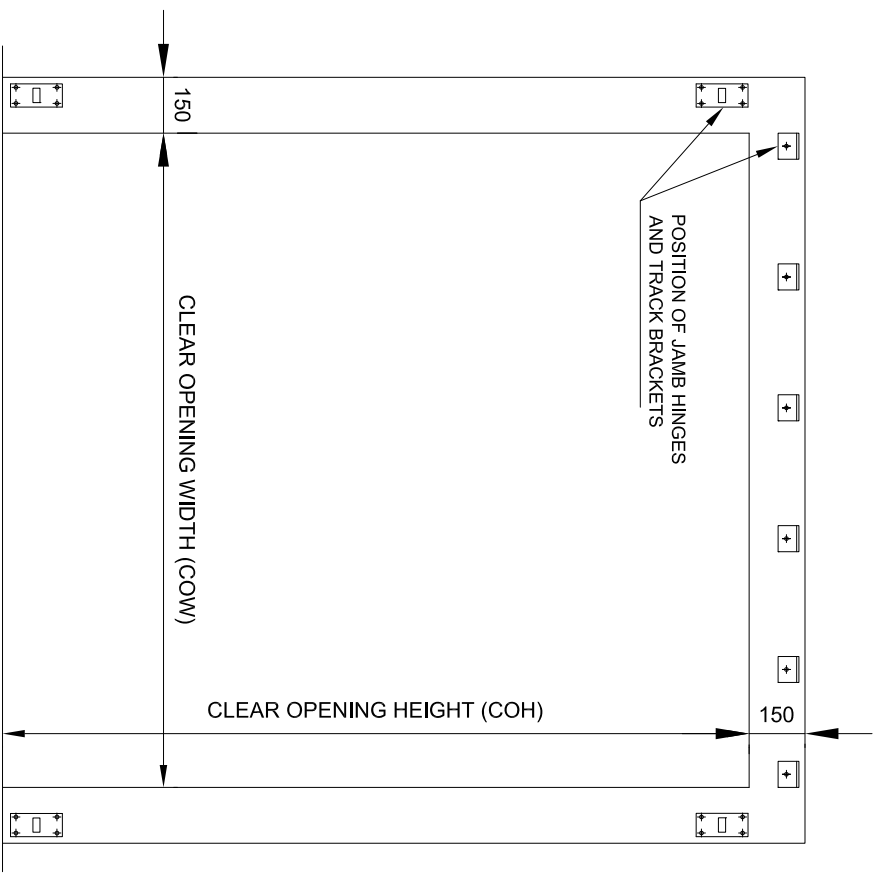
- 150 x 75 RSA REAR MOUNTED FRAME
- 200 x 100 RHS BETWEEN WALL FRAME
- OTHER - PLEASE SPECIFY

SITE DETAILS

OPENING / DOOR REF.

DATE DRAWN BY

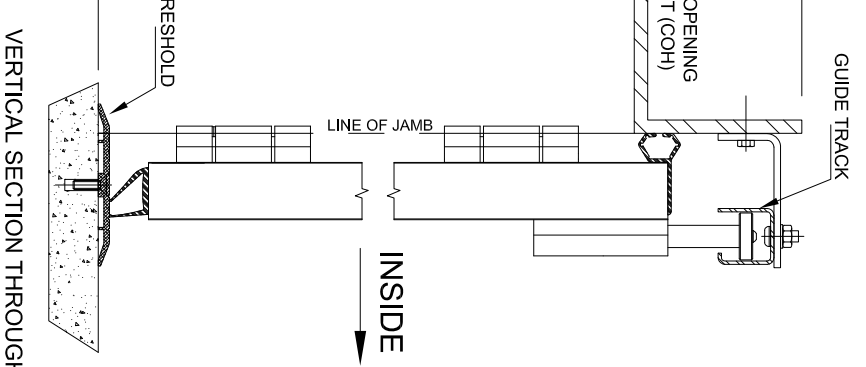
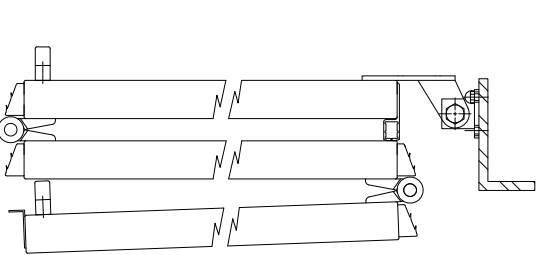
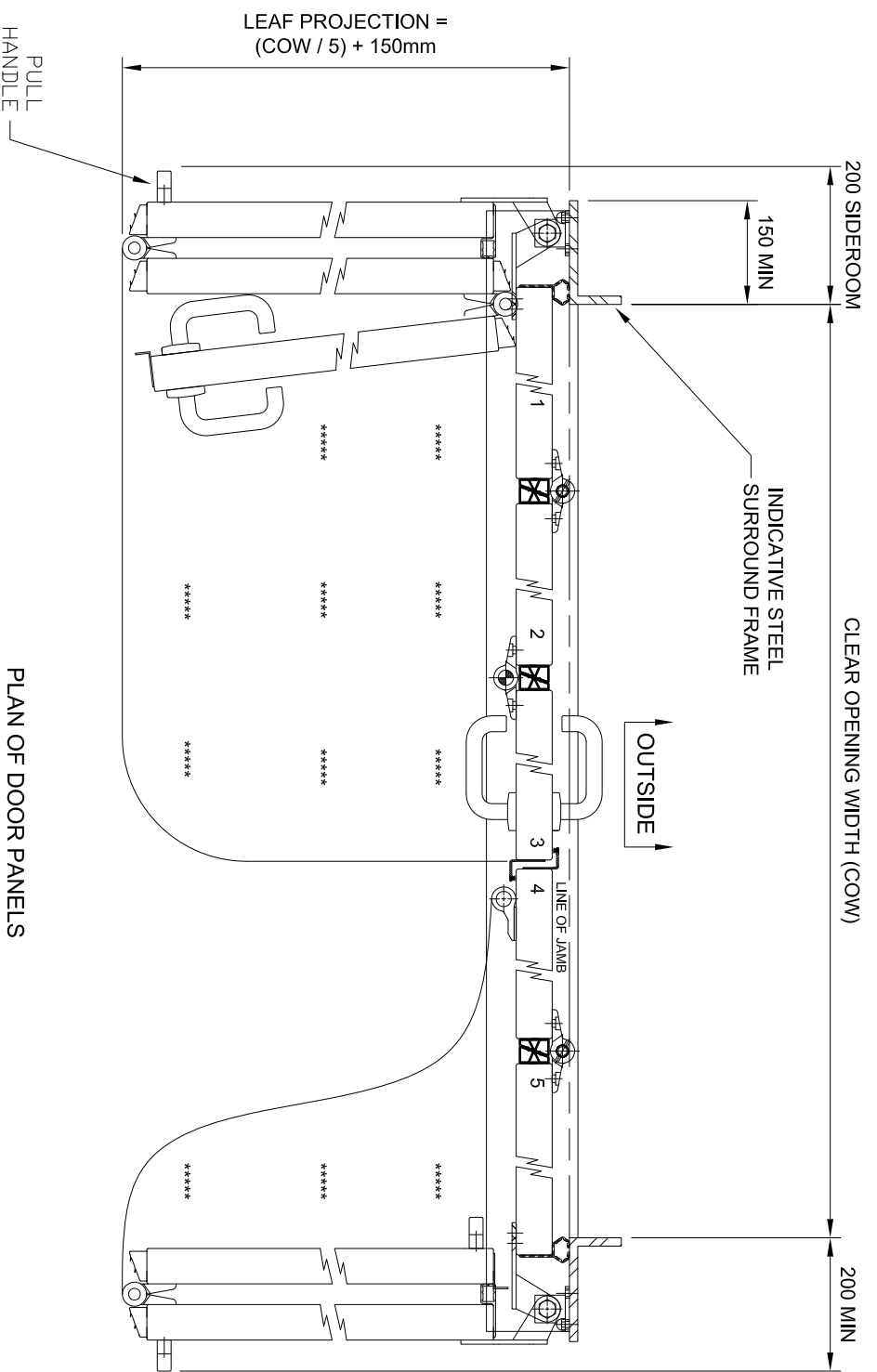
DRAWING No. SWT32M-5006



ELEVATION SHOWING INSIDE FACE OF STEEL DOOR FRAME

INTERNAL ELEVATION SHOWING STANDARD HARDWARE OPTIONS

DETAIL SHOWING OPTION FOR ESPAGNOLETTE BOLT



DETAIL SHOWING PULL HANDLE FITTED TO ACTIVE LEAF

VERTICAL SECTION THROUGH

PLAN OF DOOR PANELS IN OPEN AND CLOSED POSITIONS

MAX OPENING SIZES		
UP TO 4800mm WIDE	UP TO 4500mm WIDE	UP TO 4250mm WIDE
MAX 3000mm HIGH	MAX 4000mm HIGH	MAX 4800mm HIGH

SWIFT 3+2 LEAF, MANUALLY OPERATED (SWT-M)